

ROHM Sensor Platform Breakout Boards

Page	Contents
------	----------

1	Table of Contents/Revision History
2	Ambient Light Sensor, Hall, Temp, UV, MEMS Sensor Breakout Boards

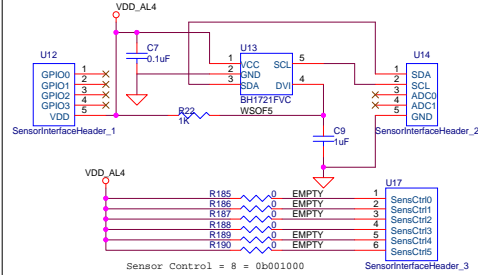
Rev	Contents
-----	----------

01	Initial release 2014-07-17
1.01	REM Control Switches, Fixed Headers, 2014-07-21
1.02	Decreased Part Count to 6, 2014-12-08

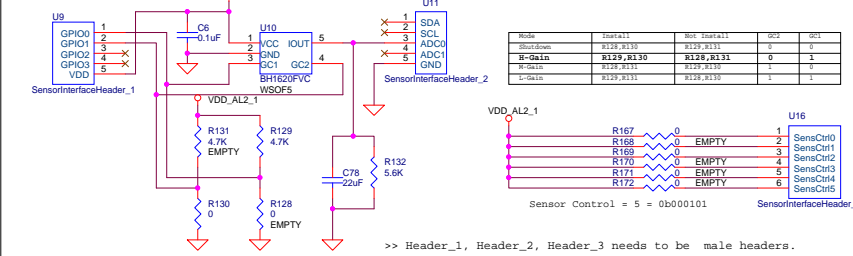
Title			Sensor Platform Schematic		
Size	Document Number		Rev		
B	Table of Contents/Revision History		01		
Date:	Monday, December 08, 2014		Sheet	1	of 5

Ambient Light Sensors

>> Type 1

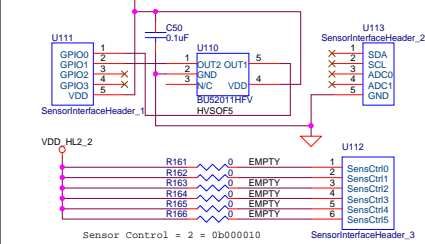


>> Type 5



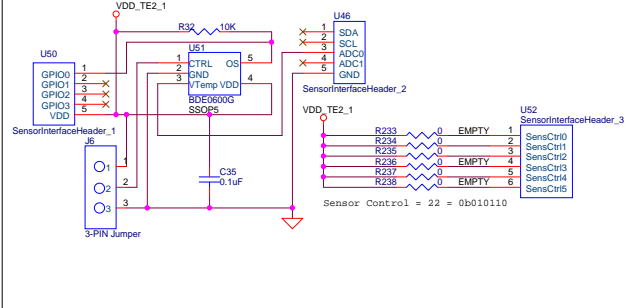
Hall Sensor

>> Type 2



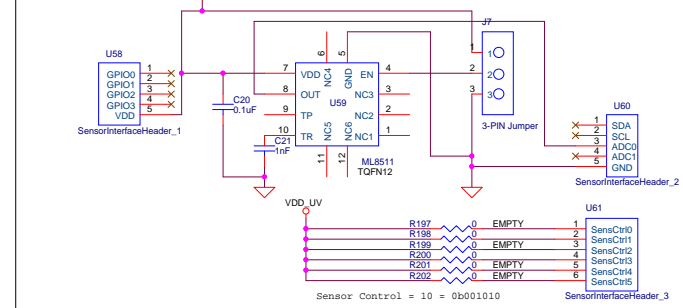
Temperature Sensors

>> Type 4



UV Sensor

>>ML8511



MEM Sensors

>>KMX061

